

Nebraska Fertilizer, Soil Conditioner and Ag Lime Tonnage and Sampling Report Calendar year 2019

(Sales are reported at the end of July and January, thus the availability of data is delayed 6 months
from the actual date of sale)

Total Commercial Fertilizer and Soil Conditioner sales during 2019 = 4,160,237.4 tons

Total ag lime sales = 379,044.9 tons Industrial by-product = 16,512.2 tons

For Year 2019:

Product ranking by sales (top 20)	Grade	Tons Sold
-Nitrogen Solution	(32-0-0)	1,625,445
-Blends/unspecified		551,274
-MAP	(11-52-0)	446,290
-Anhydrous ammonia	(82-0-0)	301,832
-Ag lime (ground and pelletized)		379,045
-Urea	(46-0-0)	291,911
-Ammonium Polyphosphate	(10-34-0)	237,214
-Muriate of Potash	(0-0-60)	138,955
-Ammonium Thiosulfate	(12-0-0+26S)	127,658
-Nitrogen Solution	(28-0-0)	88,770
-Ammonium Sulfate	(21-0-0+24S)	87,163
-Sulfate of Potash	(0-0-22)	32,100
-Gypsum	(0-0-0+21Ca+16S)	25,947
-Sulfur	(0-0-0+90S)	20,526
-Manure	(0.5-0.5-0.5)	20,025
-Calcium sulfate		17,958
-Ammonium Nitrate	(34-0-0)	17,902
-Single Nutrient		14,830
-Boron	(0-0-0+B)	12,818
-Zinc chelate	(0-0-0+20Zn)	10,302

Number of Samples collected by Fertilizer Type	Grade	Samples
-MAP	(11-52-0)	73
-Urea	(46-0-0)	69
-Muriate of Potash	(0-0-60, 0-0-62)	63
-Ammonium Sulfate	(21-0-0+24S)	52
-MESZ	(12-40-0+10S+1Zn)	45
-Ag Lime (ground and pelletized)		36
-KMAG	(0-0-21.5+10.5Mg+21.5S)	33
-Zinc	(0-0-0+35.5Zn)	31
-Sulfur	(0-0-0+90S)	30
-Gypsum	(0-0-0+21Ca+16S)	12
-Magnesium Sulfate		3
-Nitrogen Solution 32%	(32-0-0)	3
-Nitrogen	(34-0-0)	3
-Ammonium polyphosphate	(10-34-0)	3
-Nitrogen	(25-0-0)	1
-Diammonium phosphate	(18-46-0)	1
-Lawn & Garden Specialty	various	6

Total number of fertilizer and ag lime samples collected in 2019:

-435 fertilizer samples

-32 ag lime samples

Samples Out of Compliance

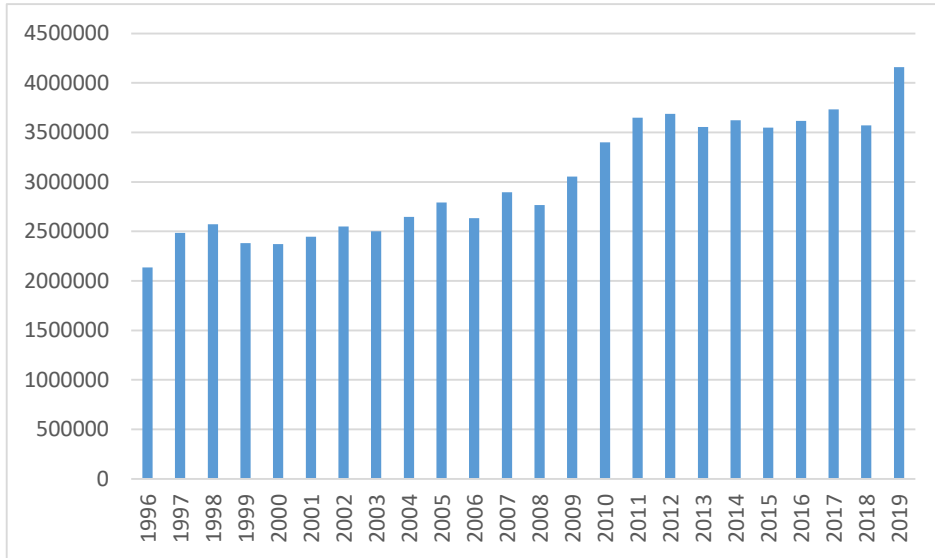
-21 fertilizer samples (4.8%)

-3 ag lime samples (9.6%)

Historical Fertilizer Sales (tons)

State-wide Totals	for period		calendar year	fiscal year
Year	Spring	Fall	CY Total	FY Total
1996	1,532,100	603,034	2,135,134	2,297,439
1997	1,820,288	663,990	2,484,278	2,423,322
1998	1,872,106	700,986	2,573,092	2,536,096
1999	1,732,505	649,164	2,381,669	2,433,491
2000	1,832,494	538,483	2,370,977	2,481,658
2001	1,642,472	804,694	2,447,166	2,180,955
2002	1,782,354	767,863	2,550,217	2,587,048
2003	1,687,624	812,111	2,499,735	2,455,487
2004	1,948,270	696,790	2,645,060	2,760,381
2005	1,991,509	801,404	2,792,913	2,688,299
2006	1,861,012	771,954	2,632,966	2,662,416
2007	2,042,037	854,430	2,896,467	2,813,991
2008	2,061,286	705,100	2,766,386	2,915,716
2009	2,334,256	720,649	3,054,905	3,039,356
2010	2,440,306	960,148	3,400,454	3,160,955
2011	2,512,042	1,137,625	3,649,667	4,360,602
2012	2,700,651	986,564	3,687,215	3,838,276
2013	2,583,037	970,445	3,553,482	3,569,601
2014	2,679,837	987,278	3,622,901	3,667,115
2015	2,711,136	836,502	3,547,638	3,709,929
2016	2,873,427	741,625	3,615,052	3,641,315
2017	2,899,690	831,518	3,731,208	3,652,651
2018	2,821,133	748,912	3,570,045	3,767,104
2019	3,018,192	1,142,045	4,160,237	

Historical Fertilizer Sales (tons) State-wide Totals per year



Total NPK Sold on Per County Basis (In-state) During Calendar Year 2019

<u>County</u>	<u>Total Tons N</u>	<u>Total Tons P</u>	<u>Total Tons K</u>	<u>Total Tons Fertilizer</u>
Adams	33530	15214	1961	137530
Antelope	27888	10491	9443	117450
Boone	18625	6316	1076	67463
Box Butte	17254	5081	605	64198
Boyd	1128	473	90	3497
Brown	9076	3402	4016	41654
Buffalo	29599	7787	1111	111383
Burt	20192	10015	5954	81634
Butler	10970	2640	274	31453
Cass	18248	2540	1117	43144
Cedar	22315	8614	5929	89595
Chase	15616	5321	855	62850
Cherry	222	0	0	714
Cheyenne	1753	388	2	6323
Clay	32861	9282	811	93673
Colfax	15808	8572	1521	66039
Cuming	7672	1340	585	24305
Custer	19238	4486	865	69389
Dakota	5209	809	476	18157
Dawes	11	11	1	58
Dawson	21176	4948	693	75614
Deuel	6899	1872	182	25969
Dixon	12994	9014	6082	96409

Dodge	18504	3737	1214	57011
Douglas	508	262	92	6525
Dundy	2065	467	19	7588
Fillmore	20551	5530	125	47608
Franklin	6804	538	13	18297
Frontier	3797	842	23	12941
Furnas	20285	5902	377	70610
Gage	19044	2973	615	40994
Garden	1914	613	18	7141
Garfield	723	234	86	2783
Gosper	8443	2442	168	31068
Greeley	6592	2906	869	25293
Hall	21337	5243	914	65729
Hamilton	119582	4115	374	51590
Harlan	3599	761	17	12435
Hayes	318	73	0	1156
Hitchcock	1435	467	0	6468
Holt	15938	5032	4068	70580
Hooker	124	84	65	555
Howard	11681	3622	1107	44846
Jefferson	21492	8707	1251	65975
Johnson	5610	269	54	9906
Kearney	25568	809	425	92790
Keith	3134	896	10	11568
Kimball	953	196	25	3428
Knox	12698	4563	3466	51124
Lancaster	15725	3577	567	37533
Lincoln	14474	3784	835	59631
Logan	1260	613	268	5592
Madison	13363	5230	3255	58136
Merrick	7900	2718	1161	30122
Morrill	6368	1146	59	23057
Nance	3610	1162	184	12988
Nemaha	8899	715	502	16330
Nuckolls	15569	3102	62	45932
Otoe	11436	2563	2401	25528
Pawnee	5813	1119	262	11780
Perkins	23274	6336	745	79103
Phelps	19073	9619	572	74677
Pierce	8440	2815	2367	34539
Platte	39492	14989	3754	132674
Polk	9818	2228	200	28977

Red Willow	14680	2151	119	50985
Richardson	15272	3487	1548	36292
Rock	1794	646	1026	9228
Saline	18546	4974	193	37613
Sarpy	5374	1748	771	15132
Saunders	17482	3753	630	52252
Scottsbluff	13930	4038	206	63096
Seward	15472	6488	155	41650
Sheridan	2230	694	102	8031
Sherman	5461	1634	276	20570
Stanton	2544	669	292	8578
Thayer	25896	9277	101	73364
Thurston	8993	3010	2665	50402
Valley	9924	3350	544	36576
Washington	1762	7	16	3843
Wayne	4193	2388	1545	19995
Webster	4769	2045	32	20314
Wheeler	1361	439	273	5704
York	25246	4518	97	64354
In-state Totals	1000427	304134	86824	3440189

Additional tons
sold by
out-of-state
dealers